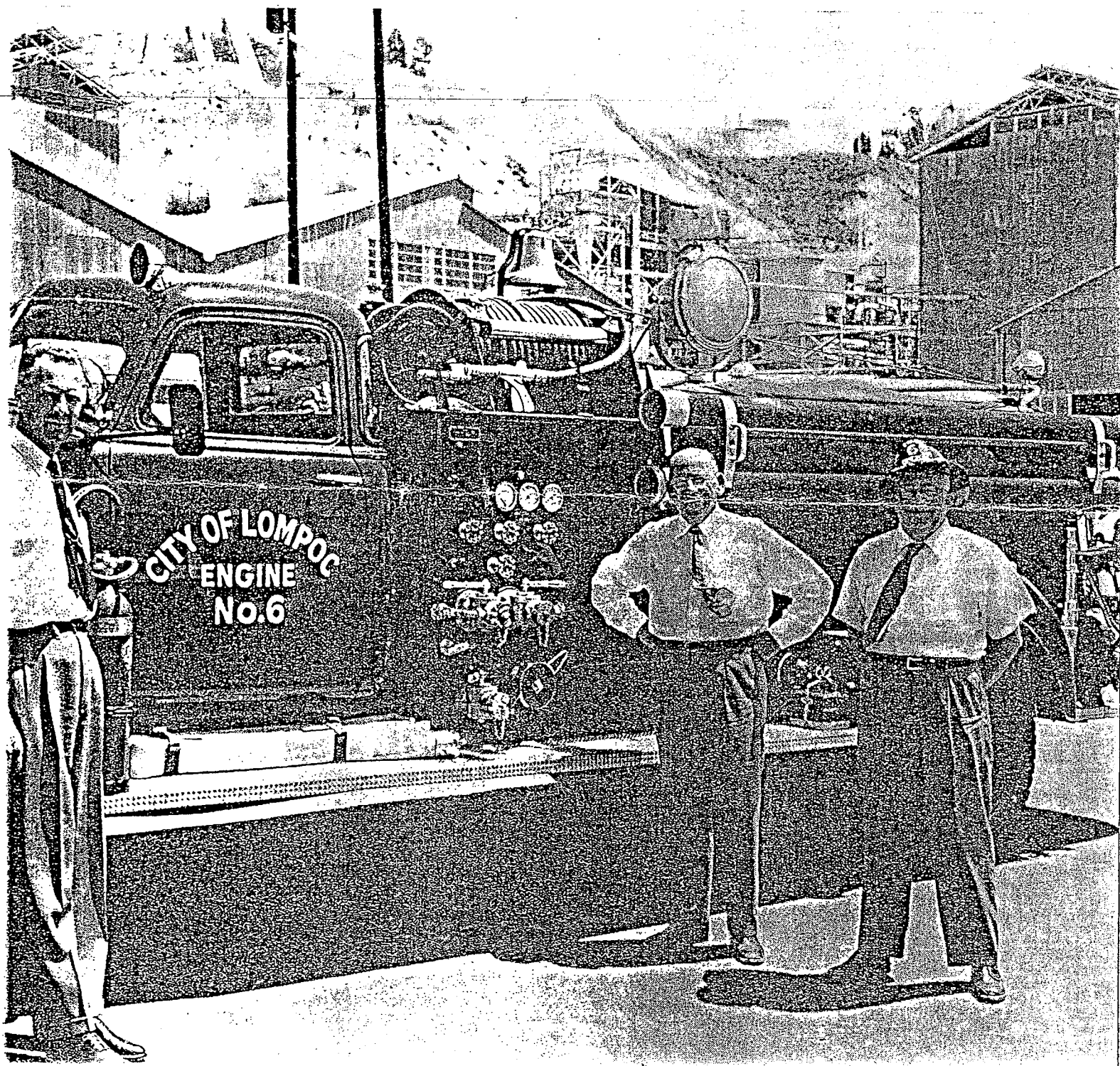
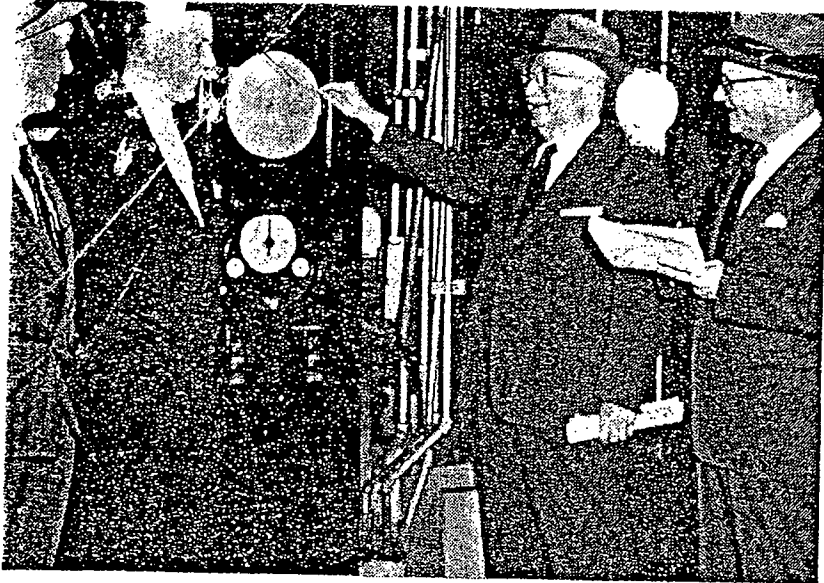




Inspection of the new mill at Asbestos, Quebec, is necessary to establish insurance rating. Making the tour are, from left, Harold Castello, who handles insurance for J-M at Asbestos; Guy Hamel, Canadian J-M Engineer; C. A. MacDonald of Marsh & McLennan, Montreal; and Al Schmidt. Marsh and McLennan are J-M's insurance brokers.

At an inspection made at the Lompoc Plant, Lompoc Fire Chief Ken Pollard is proud to show the community's new pumper to the insurance men. Left to right are Fire Chief Pollard, Industrial Engineering Supervisor H. G. Thompson (Fire Commissioner, City of Lompoc), G. L. Jesseph of Marsh & McLennan's Los Angeles office and Al Schmidt. Al was made Honorary Fire Chief of Lompoc during his July visit.





At one of the regular inspections which must be made at all J-M locations, a temperature control at Toronto Plant is looked over by from left: Karl T. Helmer, Toronto Plant Engineer; W. A. Young, Industrial Relations Manager; Al Schmidt and A. Tom of Marsh & McLennan's Toronto office.